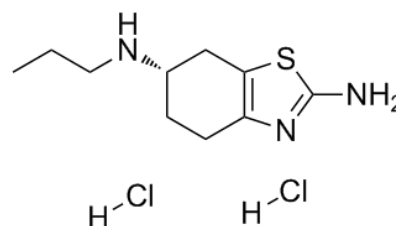


Product Name : Pramipexole dihydrochloride
Cat. No. : PC-45173
CAS No. : 104632-25-9
Molecular Formula : C₁₀H₁₉Cl₂N₃S
Molecular Weight : 284.249
Target : Dopamine Receptor
Solubility : 10 mM in DMSO



Biological Activity

A partial/full agonist of dopamine receptor with K_i of 3.9/2.2/0.5/5.1 nM for D_{2S}/D_{2L}/D₃/D₄, respectively; also possesses low/insignificant affinity (500–10,000 nM) for the 5-HT_{1A}, 5-HT_{1B}, 5-HT_{1D}, and α ₂-adrenergic receptors; used for treating Parkinson's disease (PD) and restless legs syndrome (RLS).

Parkinson's Disease

Approved

References

Newman-Tancredi A, et al. J Pharmacol Exp Ther. 2002 Nov;303(2):805-14.

Kvernmo T, et al. Clin Ther. 2006 Aug;28(8):1065-78.

Millan MJ, et al. J Pharmacol Exp Ther. 2002 Nov;303(2):791-804.

Caution: Product has not been fully validated for medical applications. Lab Use Only!

E-mail: tech@probechem.com